

WELLISAIR AIR DISINFECTION PURIFIER

USER MANUAL

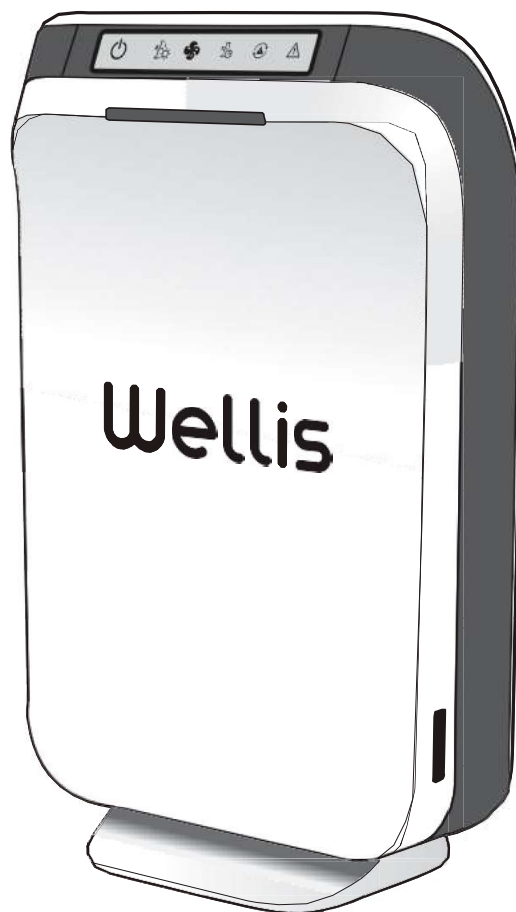


Item no. 504000

TELEPHONE +49 7461 96 580 0
www.eickemeyer.com

veterinary technology for life
Eickemeyer®

Wellis



Air Disinfection Purifier

WADU – 02

Product name	Wellisair Air Disinfection Purifier
Model	WADU-02
Power consumption	3.6W
Noise	Less than 30 DB
Optimal protection zone	50/60 m ²
Operating Place	Indoor only
Weight	1.7Kg (including cartridge)
Size	(W)220mm x (D)150mm x (H)370mm

* Before using, it is highly recommended that you read this user manual.

* Product out-look and specification might be changed without notice for the product improvement.

* Design and color would be different from a cover design.

Introduction

Thank you for purchasing Wellisair Air Disinfection Purifier (WADU-02)!

This product has been developed based on the theory of “natural purifiers” present in the atmosphere known as hydroxyl radicals. Our hydroxyl radicals technology provides a unique solution in disinfecting the air and space surfaces removing continuously harmful bacteria, viruses, fungi and odor indoors.

Wellisair Disinfection Purifier provides a high level of indoor air quality experience and ensures safety to the family.

It is highly recommended to read the user manual for instruction, precautions, and detailed information before using the product.

Table of Contents

1. Product features.....	4
1.1. Disinfection and it's technology	5
1.2. Test result.....	5
2. Safeguards.....	6
3. Identification of Parts	9
4. Display and touch buttons.....	10
4.1. Touch button.....	10
4.2. Display	10
5. Operation (device).....	11
5.1. Operating mode.....	11
5.2. Night mode	11
6. Operation (cartridge)	12
6.1. Cartridge preparation	12
6.2. Cartridge replacement.....	12
6.3. Cartridge replacement interval	13
6.4. Precaution of cartridge usage	13
7. For standing with cradle	14
8. Wall Mount	16
9. Checkpoints before After Sales service call	18
10. Guarantee	19

1. Product features

1 Powerful disinfection and de-odorization

Hydroxyl radicals produce a harmless chemical reaction that creates a unique solution capable of disinfecting actively the air and space surfaces removing harmful bacteria, viruses, fungi, odor and VOCs indoors.

2 Constant level of high air quality

Indoor pollutants are generated from indoor life itself and from going back and forth outside. So, we need to remove it continuously. Wellisair air purifier has been developed to meet this requirement to operate 24 hours a day. We recommend using device for 24 hours to have a much higher air quality.

3 Proven technology

The effectiveness of this technology against viruses and bacteria has been tested in various international laboratories and universities. Field trials have also been carried out in hospitals, schools, veterinary clinics...

4 Easy/cheap to use and maintain

Replace the cartridge every three months to ensure continuous high-level air purification. Power consumption is also low so that monthly charge does not exceed \$1. There is no need to buy and change filters or UV lamps.

* Cartridge replacement interval might be different depending on user's operating environment such as temperature and humidity.

5 Error detection system

In case of no cartridge in the device or with the cartridge inserted improperly, red alarm sign with sound works.

6 Contamination level sensing

Indoor air quality is displayed with air contamination sensor.

7 Alarm signal for the cartridge replacement

7 days before the cartridge is used up, replacement display works and you can properly replace the cartridge. Once you miss right timing of replacement, the device will stop automatically with red alarm light.

8 Additional function

- Both for wall-mounted and stand type purpose

Modern and slim with convenience in usage. Once required, you can easily hang the device up on the wall.

- Wide coverage

Recommendable treated area is up to 50–60m² depending on pollutant extent.

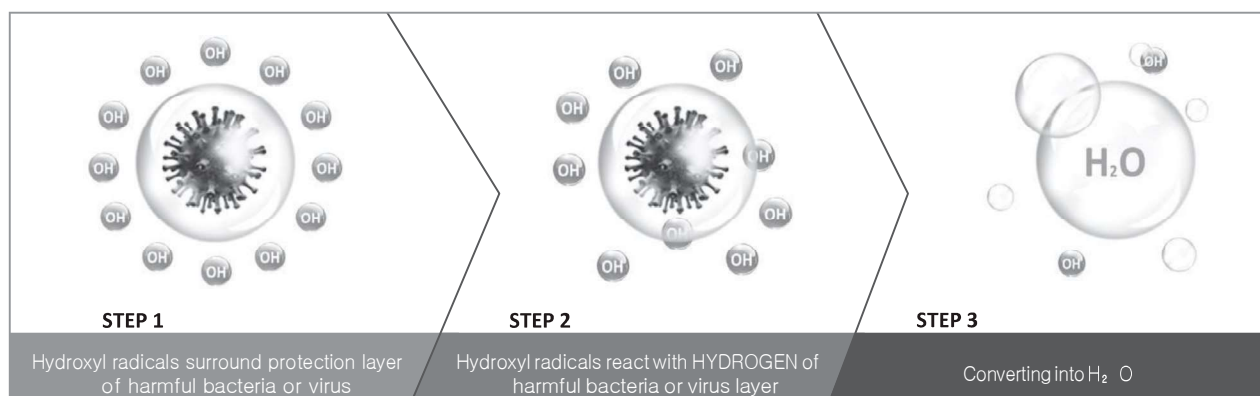
1. Product features

1.1 Disinfection and it's technology

● Hydroxyl radicals?

Hydroxyl radicals are produced by sunlight and trapped in the ozone as humid air. These natural substances are harmless and easily extinguished with other contaminants.

● How do hydroxyl radicals disinfect?



1.2 Test result

Tested by KCL (Korea Conformity Laboratories) / 2016. March 24th issued

TETS ITEMS	TEST RESULT			Testing Environment
	Early Concentration (CFU/mL)	After 4hrs Concentration (CFU/mL)	Reduction rate of bacteria(%)	
Antibacterial test for Escherichia coil	1.7X10 ⁴	<10	99.9	(37.0±0.1)°C (33.1±0.2)% R.H.
Antibacterial test for Pseudomonas aeruginosa	1.9X10 ⁴	<10	99.9	
Antibacterial test for Staphylococcus aureus	1.4X10 ⁴	<10	99.9	
Antibacterial test for Salmonella Typhimurium	1.6X10 ⁴	<10	99.9	(37.0±0.1)°C (33.1±0.2)% R.H.
Antibacterial test for K pneumoniae	2.0X10 ⁴	<10	99.9	
Antibacterial test for MRSA	1.2X10 ⁴	<10	99.9	

* Show 99.9% reduction rate after 4hours test on surface to measure air disinfection capability.

TETS ITEMS	TEST RESULT			Testing Environment
	Early Concentration (CFU/mL)	After 4hrs Concentration (CFU/mL)	Reduction rate of bacteria(%)	
Reduction test for Airborne microbes (Klebsiella pneumoniae)	1.2X10 ⁴	<10	99.9	(23.0±0.2)°C (50.2±1.0)% R.H.
Reduction test for Airborne microbes (MRSA)	1.0X10 ⁴	<10	99.9	(23.0±0.2)°C (50.2±1.0)% R.H.

* Show 99.9% reduction rate after 4hours test of airborne to measure air disinfection capability.

2. Safeguards

※The rank of safeguards are being divided into “warning” and “cautions”



It might cause serious injury or even death if you do not follow below instructions.

Do not use any other power supply.

- It might cause device troubles, fire, or electric shock.

Do not overload power outlets, extension cord, convenience receptacles.

- It might result in fire.



Do fully insert and fit electric plug into electric sockets.

- It could be a cause of fire unless it completely fits.



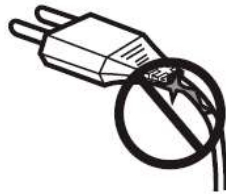
Pull the plug rather than cord when you disconnect your device from the power outlet.

- It might cause device troubles, fire, or electric shock.



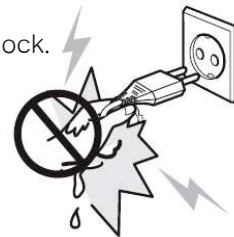
Stop using the device and call our A/S center when electric cord or plug is damaged.

- It might result in fire or electric shock.



Never pull or insert the plug with wet hand.

- It might cause electric shock.



Do not walk on or pass over the power cord.

- It might result in injury or electric shock.



Make sure to check that there is no dust or water on the plug before using it.

- It might cause fire or electric shock.



2. Safeguards

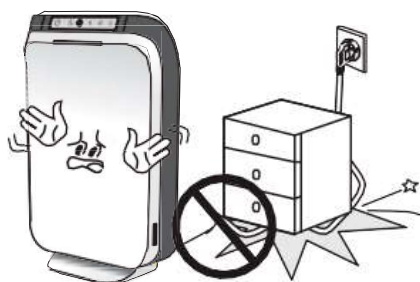
※ The rank of safeguards are being divided into “warning” and “cautions”



It might cause serious injury or even death if you do not follow below instructions.

Do not bend or put heavy stuffs on the power cord.

- It might cause electric shock or fire.



Keep the device distant from fire, heaters, or explosive chemicals such as fumes, spray, butane gas, candle.

- It might cause fire or explosion.



Do not operate the device in highly wet conditions. Contact with Snow or rain cause troubles.

- It might result in troubles, fire, or electric shock.



Stop operating the device when you recognize abnormal noise and smell.

- Turn off and pull the plug from power outlet when you recognize abnormal noise and smell or in case of earthquake, fire, flood, etc.,



※ It is highly recommended that you read these precautions before using the device.

2. Safeguards

※The rank of safeguards are being divided into “warning” and “cautions”



It might cause damage in property, malfunction, or low performance.

This device is only for indoor use (5–40°) and do not operate outdoors

- It might cause device troubles, deformation or color change.



Do not place the device on any unstable / slope surfaces or too high position.

- It might result in a device breakdown or fire.



Never put any kind of objects (pin, stick, coin, or other materials which are not given) into the device.

- It might cause device troubles or electric shock.



Never attempt to cover the vents with laundry, curtain, clothes, etc.,

- It might result in fire and device troubles arising from internal heat of the device.



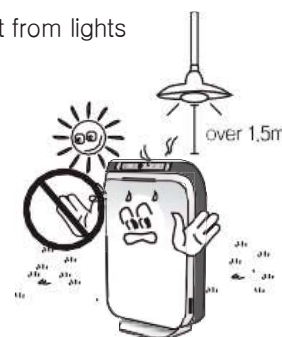
Do not move the device during operation

- It might cause device trouble.



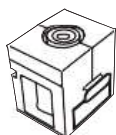
Keep the device 1.5m distant from lights and avoid direct sunlight.

- It might result in device color change

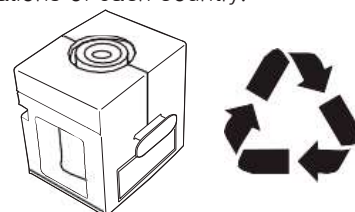


Small amount of solution can be left in used-up cartridges. Never let children and pet eat it.

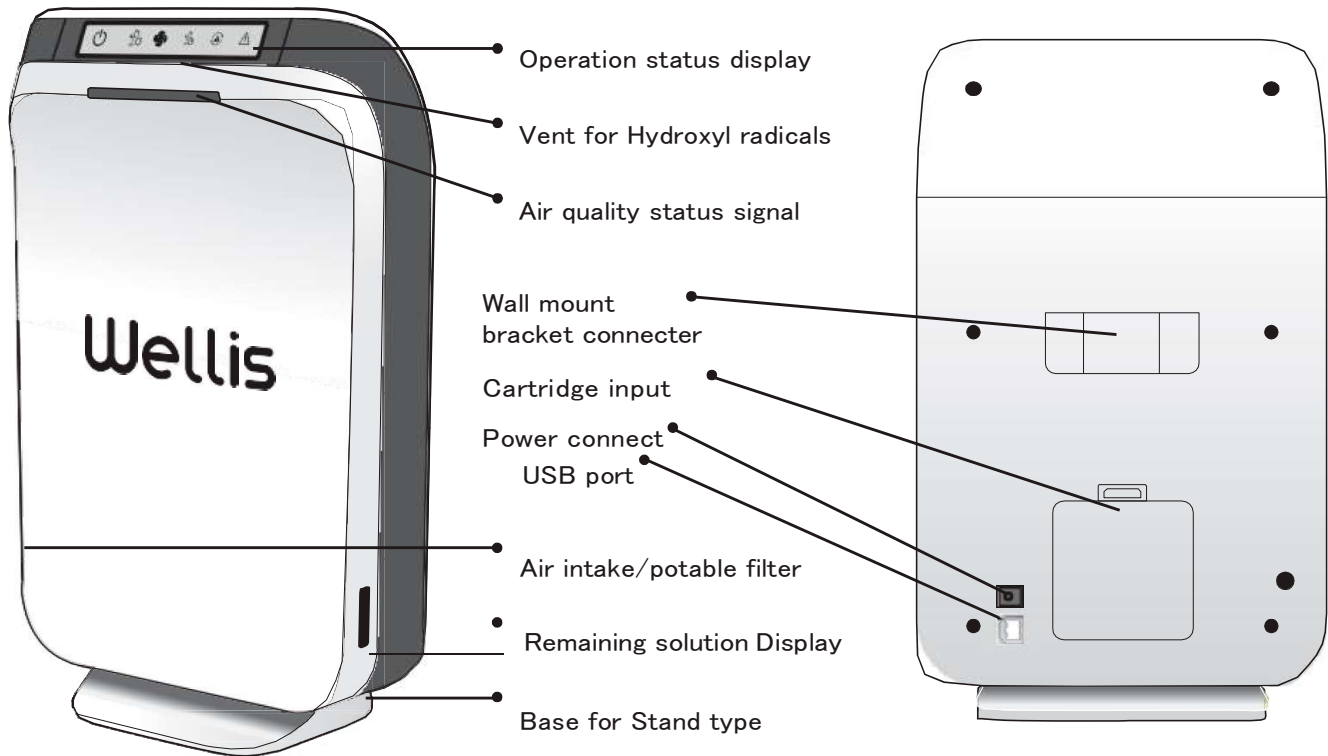
- It might cause stomachache, injury, or skin irritation.



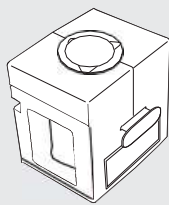
Please dispose of used-up cartridges properly in the corresponding recycling container according to the regulations of each country.



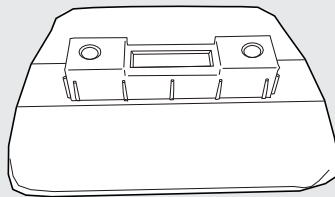
3. Identification of Parts



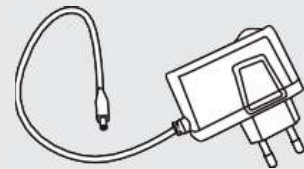
※ USB port : Do not use, only for production.



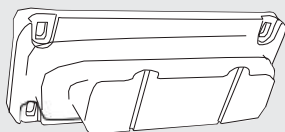
Cartridge



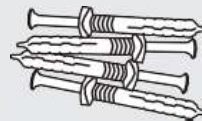
Base (for stand type)



12V DC Adapter



Bracket (for wall-mount type)



Nail (for wall mount type)

4. Display and touch buttons



4.1 Touch buttons



Operating button: Turn on and off the device.



Night mode button: Convert into night-mode operation.

4.2 Display



Operating mode: displays normal operation.



Night mode: displays more silent operation and for no light at night.
* In order to convert night mode into operating mode, press the night button.

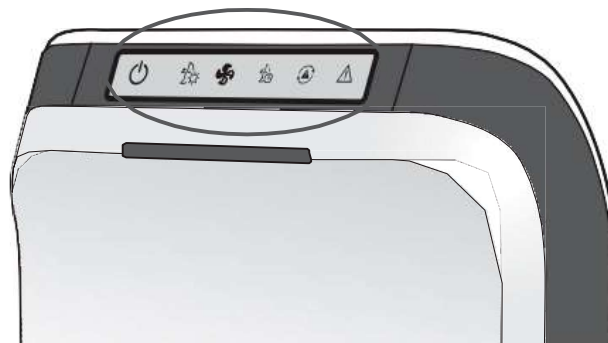
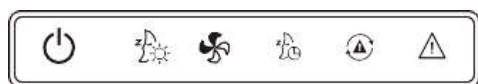


Cartridge replacement alarm: indicates that the cartridge needs to be replaced.





Warning alarm: alarms improper installation of cartridge or passed cartridge working duration.

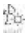

5. Operation (Device)



5.1 Operating Mode

- ① Put the device on the table or wall using stand or wall mounted bracket with rigidity.
- ② Insert the adaptor jack into the DC power input(socket) on the rear of the device and put the adapter plug into power outlet
- ③ Press  the operating button to turn the device on. The device will start working when the operating mode lights up and after a short buzzer sound.
- ④ Air quality status signal light will light up from red, orange, blue for 5minutes. Orange light can display up to 30minutes until the device reaches its normal condition indicated by the blue light.
- ⑤ Without the cartridge or inserting the cartridge improperly as instructed,  warning alarm light will light and the device stop operating.
- ⑥ If the warning alarm light continuously blinks even after following the above conditions, contact the nearest service center or local distributor for further instructions.

5.2 Night Mode

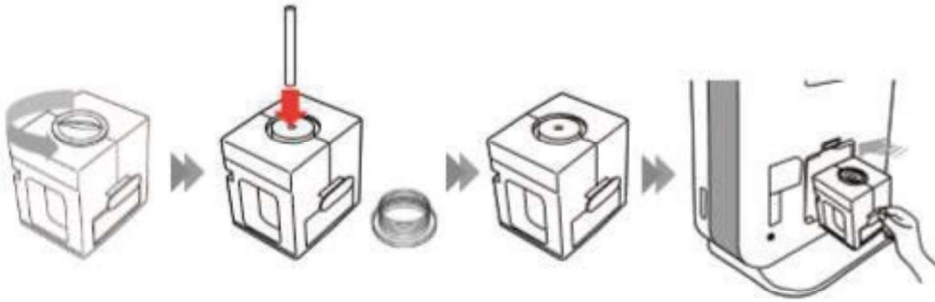
- ① Press  the right mode button to convert the device into mode. In night mod, fan speed gets lower which leads to much less sound at with the device operating and no light.
- ② In order to convert night mode into operating mode, press  the night mode button.

6. Operation (Cartridge)

6.1 Cartridge preparation

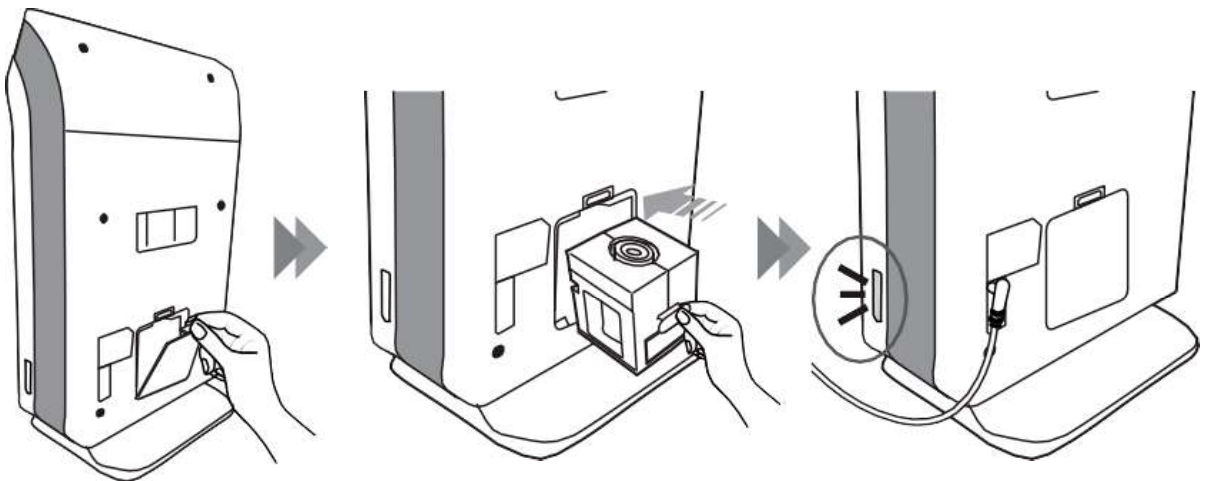
- ① Remove the cap from the top of the cartridge by turning it clockwise.
- ② Insert the white fiber wick through the hole until the wick is flush with the cap, and then place the cartridge into the device.

* In case of leakage, wipe and clean with a tissue.






6.2 Cartridge replacement

- ① Open the cartridge cover in rear face of device and push the cartridge into the device tightly.
 - ② Close cartridge cover.
- * Insert cartridge and close cartridge cover properly if not the case “warning alarm” will light on.
- ③ Once the replacing or inserting the cartridge properly then, the device will be operated with buzzer sound.
 - ④ Green light for display of remained orange oil of cartridge will light.



6.3 Cartridge replacement interval

- ① After approximately 3 months of use, the cartridge should be changed. The initial amount of liquid is oversized so that it never runs out of solution and can generate hydroxyl radicals for at least 3 months.
* According to the mode of use (normal/night) and the environment (temperature and humidity) the amount of solution remaining will be different.
- ② Replace the used cartridge with new one when prompted by the white fixed alarm light of the cartridge .
- ③ In case you do not replace properly after 7 days from the cartridge alarm light, the device will stop operating. It will be indicated by the blinked white alarm light and the red warning light  .

6.4 Precaution of cartridge usage

- ① Moving Device location: When you need to move device, take cartridge out and close the cap not to leak the solution.
- ② Do not place the device on any unstable/slope surfaces, It might result in a device breakdown due to possible solution leakage.
※ The cartridge solution may cause product damage.
- ③ The cartridge should be replaced after 3 months.
- ④ A small amount of oil may remain inside the bottle after 3 months.
- ⑤ If you do not use it immediately, please keep it in a cool and dry place in an upright position.
- ⑥ Preferably the maximum storage period of the cartridge is 2 years.



EN

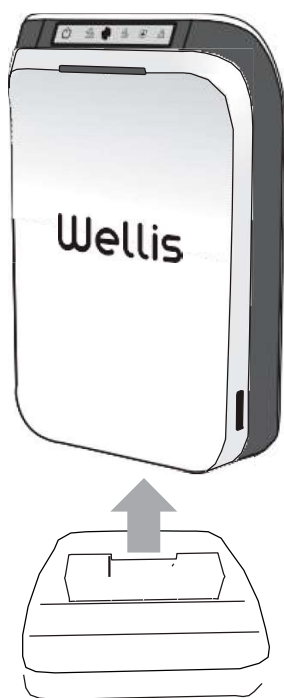
PRECAUTIONS:

Causes skin irritation. May cause an allergic skin reaction. IF ON SKIN: Wash with plenty of soap and water. If skin irritation or rash occurs: Get Medical advice/attention. Flammable liquid and vapour. Keep away from heat/ sparks/ open flames/ hot surfaces. – No smoking. May be fatal if swallowed and enters airways. IF SWALLOWED: Immediately call a POISON CENTER or doctor/physician. Do NOT induce vomiting. Very toxic to aquatic life with long lasting effects. Avoid release to the environment. Dispose of contents/container to a waste treatment or disposal facility.

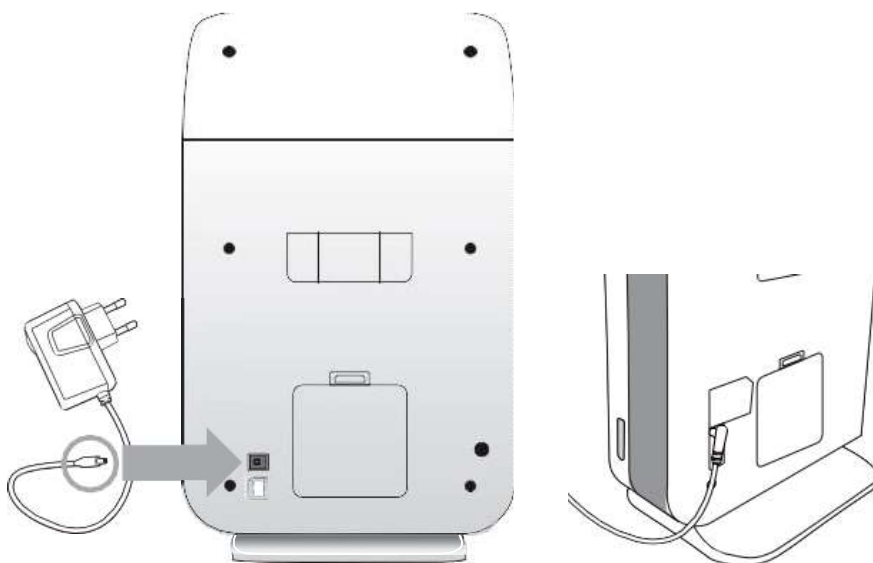
7. For standing with cradle

① Carefully fit the Device onto the base of the cradle as indicated.

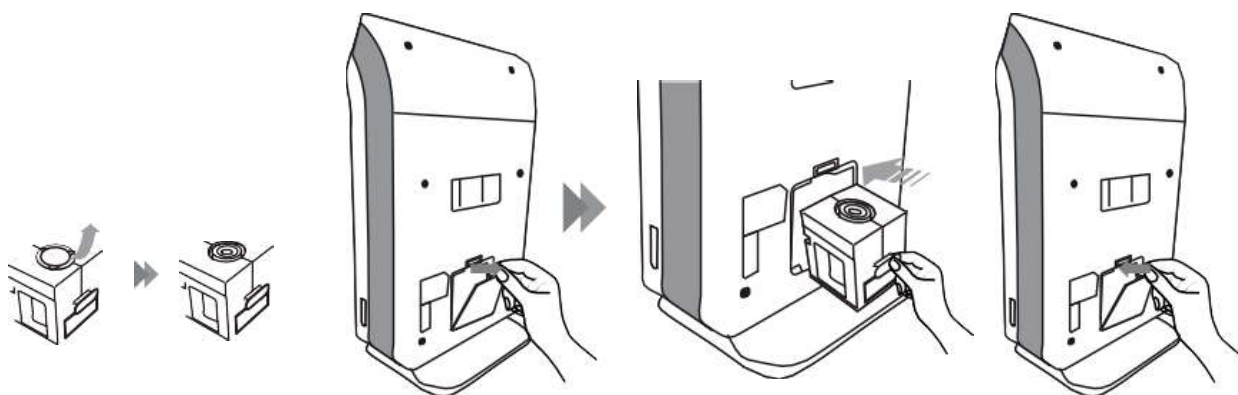
To maximize the purified area, place Wellisair at 1,5m height and 60cm minimum from any wall. It would be also good to place it into an area with ventilation.



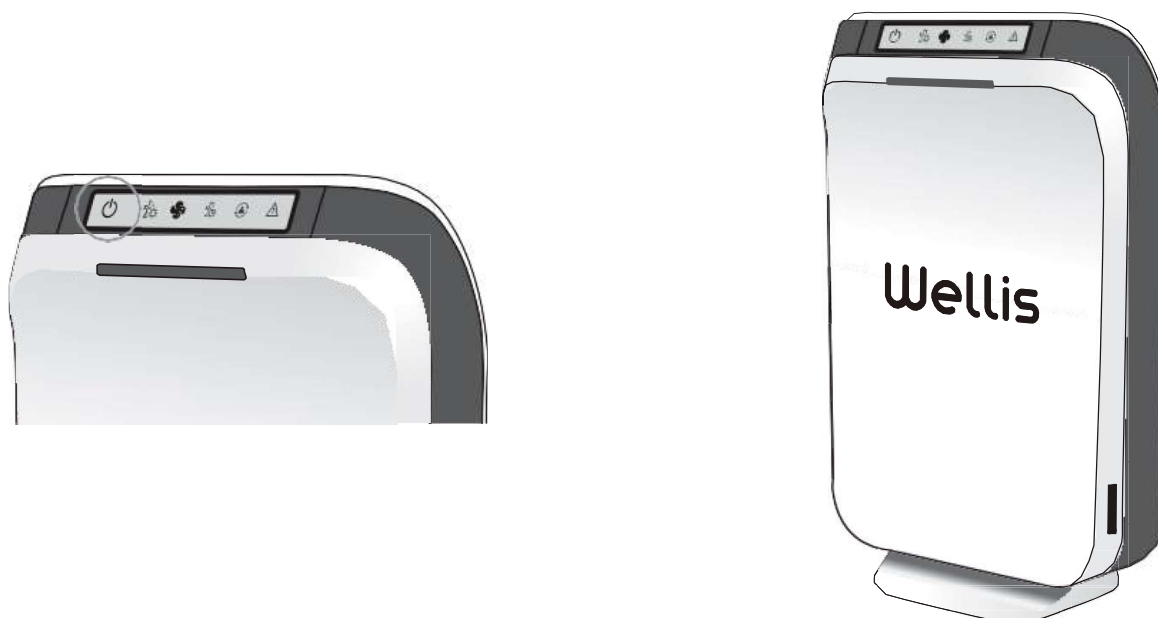
② Plug in the power supply to the Device as indicated



- ③ Open the door of cartridge and insert the cartridge into the Device, gently pushing until located and close the door as indicated.

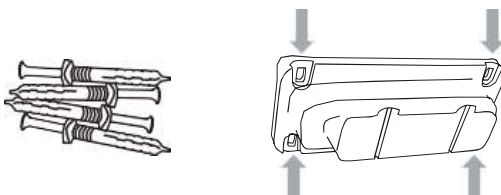


- ④ Touch the power button to turn the Device on

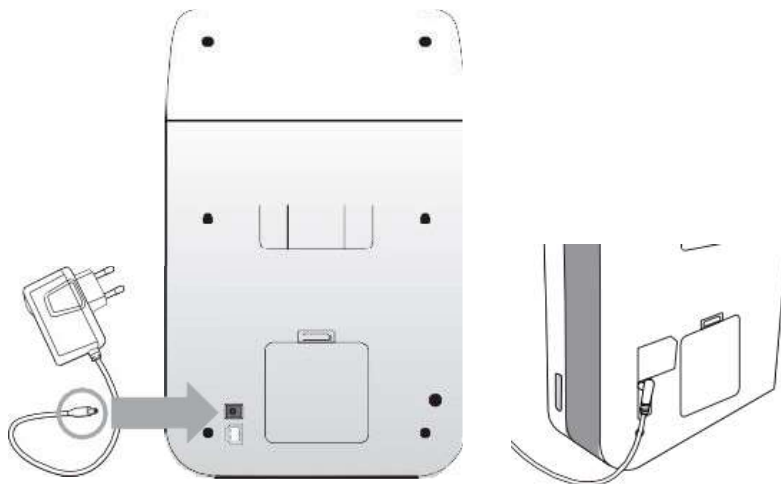


8. Wall Mount

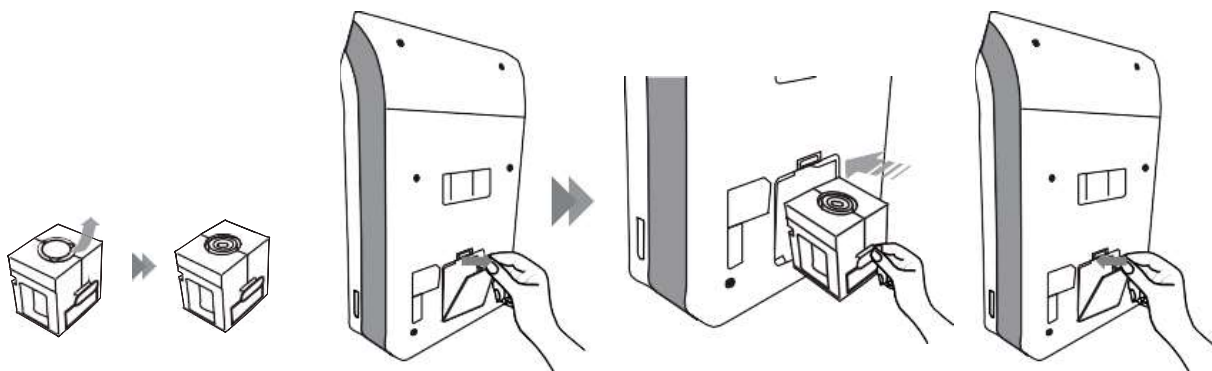
- ① Fix firmly the wall bracket on the wall using the fixing screws as indicated



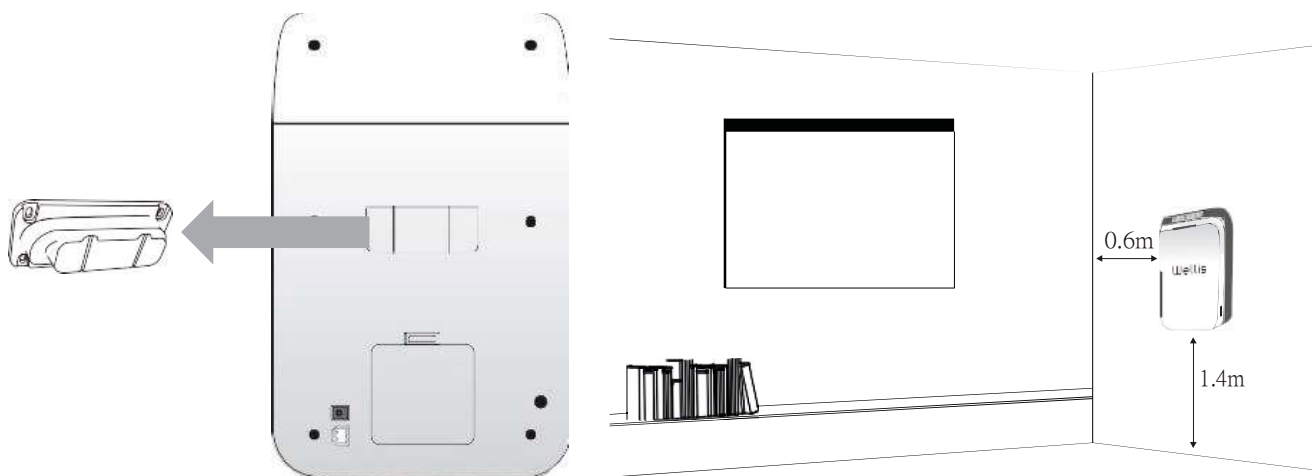
- ② Plug in the power supply to the Device as indicated



- ③ Open the door of cartridge and insert the cartridge in the Device, pushing firmly until located and close the door as indicated.



- ④ Hang the Device up with the wall bracket, making sure the Device locates fully with the wall bracket as indicated.



※ It is recommended that the Device (bottom of device) is positioned such that it operates 140cm away from the floor and a minimum 60 cm away from the wall.

- ⑤ Touch the power button to turn the Device on.



9. Checkpoints before After Sales service call..

Symptom	Check point	Yes	No
Display turned off or No operation of the device	Power connected properly?	Call After Sales service center.	Connect properly (AC 220/100V 50/60hz power)
	Defective power outlet?		
Remarkable performance difference	Passed replacement time?	Replace the cartridge	Call After Sales service center
Device vibrating seriously (abnormal sound)	Placed it on unstable or slope surface?	Call After Sales service center	Move the device onto stable and flat surface
Cartridge alarm mode light blinking	Improper inserting of the cartridge into the device?	Insert and push fully the cartridge into the inside of device and close the cover	Call After Sales service center
	Passed replacement time? (3 months)	Replace the cartridge	Call After Sales service center

※ When return the device, please separately pack “device” and “cartridge”

10. Guarantee

Your device is guaranteed for a period of two years from the date of purchase (invoice). We will adjust, repair or replace at our discretion from our warehouse any defect, system failure or part found to be defective. The assembly cost out of our warehouse is at buyer expense. The products that, in our eyes, have been inadequately used, incorrectly manipulated, improperly installed, connected to different nominal tensions, modified, repaired by non-authorized workers or that have suffered damages during transport are totally excluded from the guarantee.

GERMANY

EICKEMEYER KG
Eltastraße 8
78532 Tuttlingen
T +49 7461 96 580 0
F +49 7461 96 580 90
info@eickemeyer.de
www.eickemeyer.de

POLAND

EICKEMEYER Sp. z o.o.
Al. Jana Pawła II 27
00-867 Warszawa
T +48 22 185 55 76
F +48 22 185 59 40
info@eickemeyer.pl
www.eickemeyer.pl

SWITZERLAND

EICKEMEYER AG
Sandgrube 29
9050 Appenzell
T +41 71 788 23 13
F +41 71 788 23 14
info@eickemeyer.ch
www.eickemeyer.ch

DENMARK

EICKEMEYER ApS
Solbakken 26, Hammelev
6500 Vojens
T +45 7020 5019
info@eickemeyer.dk
www.eickemeyer.dk

ITALY

EICKEMEYER S.R.L.
Via G. Verdi 8
65015 Montesilvano (PE)
T +39 085 935 4078
F +39 085 935 9471
info@eickemeyer.it
www.eickemeyer.it

UNITED KINGDOM

EICKEMEYER Ltd.
3 Windmill Business Village
Brooklands Close
Sunbury-on-Thames
Surrey, TW16 7DY
T +44 20 8891 2007
info@eickemeyer.co.uk
www.eickemeyer.co.uk

NETHERLANDS

EICKEMEYER B.V.
Bellweg 44
4104 BJ Culemborg
T +31 345 58 9400
info@eickemeyer.nl
www.eickemeyer.nl

CANADA

EICKEMEYER Inc.
617 Douro Street, Suite #205
Stratford, Ont. Canada
N5A 0B5
T +1 519 273 5558
F +1 519 271 7114
info@eickemeyervet.ca
www.eickemeyer.com